

2025 Q3 Kulzer Lab Specials

AVAILABLE UNTIL 9.30.2025



cara®

dima®

cara[®] PRINT CUBE

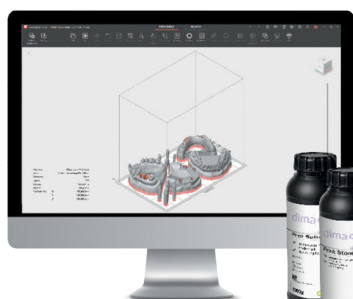
IT'S MORE THAN
3D PRINTING.

IT'S A COMPLETE
WORKFLOW.



KULZER
MITSUI CHEMICALS GROUP

FULLY
VALIDATED
WORKFLOW



FOR MORE INFORMATION ON THE CARA[®] PRINT CUBE,
CONTACT YOUR KULZER SALES REPRESENTATIVE OR
VISIT [KULZERUS.COM/MY-CUBE](https://www.kulzerus.com/my-cube)

2025 Q3 Kulzer Lab Specials



KULZER
MITSUI CHEMICALS GROUP

**CAN'T
MISS
OFFER**

LIMITED-TIME OFFER - MONDIAL® TEETH & PALA® ACRYLIC



**Pala® Denture
Teeth Info**



**Pala® Dental
Materials Info**



**BUY 10 Mondial® or Mondial® i Teeth Cards
GET 1 Pala Polish + 1 Palaseal® (2 x 15 ml) at NO CHARGE!**

CAMPAIGN#: 1000806537.

**BUY 4
GET 1**



**BUY 4 Modern Materials®
Gypsum (25lbs or 45lbs)*
GET 1 at NO EXTRA CHARGE!**



Modern Materials® Info

**BUY 2
GET 1**



**BUY 2 PalaPress® Vario Acrylic
Powder and Liquid Combination
GET 1 AT NO EXTRA CHARGE!**

CAMPAIGN#: 1000806151.



Pala® Dental Materials Info

MIX AND MATCH

**BUY 3
GET 1**



**BUY 3 Modern Materials®
Coprwx or Bite Blocks
GET 1 at NO CHARGE!**

CAMPAIGN#: 1000806521.



Modern Materials® Wax Info

*Modern Materials® Gypsums are fulfilled with order by dealer. No charge item(s) will be of equal or lesser value. **TO REDEEM ADDITIONAL PRODUCTS:** Purchase products from an authorized Kulzer dealer between 7/1/25 and 9/30/25. Write campaign number on dealer invoice and mail to: Kulzer, Attn: Free Goods Fulfillment, 4315 S. Lafayette Blvd., South Bend, IN 46614, or email to freegoods.NA@kulzer-dental.com. All invoices must be received by 10/31/25. All offers subject to change. Not to be combined with any other offers. Please allow 6-8 weeks from date invoice is received for delivery. **OFFERS EXPIRE: 9/30/25. ©2025 Kulzer, LLC. All Rights Reserved. DISTRIBUTED BY: Kulzer, LLC. 4315 S. Lafayette Blvd., South Bend, IN 46614.**