



# YOUR MASK – YOUR FIT

## SafeMask® **NEW** Curve

Procedure Earloop Face Masks

Contoured fit ensures breathability and more complete coverage.



ASTM LEVEL 3

220114

220115

25 masks/box; 8 boxes/case

**2+1**

## SafeMask® **NEW** Artisan

Procedure Earloop Face Masks

Protection with an ultra lightweight feel.



ASTM LEVEL 3

221414

221492

221415

50 masks/box; 10 boxes/case  
Also available in ASTM level 2.

**2+1**

## SafeMask® **NEW** SofSkin ClearFit

Procedure Earloop Face Masks

Personalized fit and prevents fogging.



ASTM LEVEL 3

220014

50 masks/box; 10 boxes/case

**2+1**



## SafeMask® **NEW** SofSkin Fit

Procedure Earloop Face Masks

Personalized fit that conforms to each individual face shape.



ASTM LEVEL 3

219914

50 masks/box; 10 boxes/case



## SafeMask® **NEW** Vision

Procedure Earloop Face Masks

Speak. See. Connect.



ASTM LEVEL 3

221514

50 masks/box; 10 boxes/case



## SafeMask® SofSkin

Procedure Earloop Face Masks

Made especially for sensitive faces.



ASTM LEVEL 3

2086

2088

2087

2089

50 masks/box; 10 boxes/case

Also available in ASTM level 1.



## SafeMask® Classics

Procedure Earloop Face Masks

Reliable respiratory protection at a surprisingly low price.



ASTM LEVEL 3

205314

205317

205315

205316

50 masks/box; 10 boxes/case

Also available in ASTM levels 1 & 2.



## Midnight

Procedure Earloop Face Masks

Sophisticated style.



ASTM LEVEL 3

213992

50 masks/box; 10 boxes/case

Also available in ASTM levels 1 & 2.



## SafeMask® FreeFlow

Procedure Earloop Face Masks

Integrated strip prevents eyewear from fogging.



ASTM LEVEL 3

200514

200511

200515

200516

50 masks/box; 10 boxes/case

Also available in ASTM levels 1 & 2.



# Ocean Pacific TruAloe

Nitrile Medical Examination Gloves

# Ahhloe

Improve hand hydration by 390% after 12 days of use.<sup>1</sup>

- Aloe vera-infused soothes and moisturizes.
- Accelerator-free DermaSense technology reduces the risk of developing and/or worsening skin sensitization.



■ **1226 A-E** (XS-XL)  
 2.95 mils<sup>1</sup>, 3.5 g  
 200 gloves/box; 10 boxes/case

**2+1**

## Ocean Pacific Elements

Biodegradable Nitrile Medical  
Examination Gloves

81% biodegradable  
in less than 1.5 years.\*

■ **OP(XS-XL)-BIO**  
 3 mils<sup>1</sup>, 3.5 g  
 200 gloves/box; 10 boxes/case

**2+1**



## SafeBasics True Fit Thin™

Nitrile Medical Examination Gloves



Versatile,  
all-purpose glove.

■ **1185 A-E** (XS-XL)  
 3 mils<sup>1</sup>, 3.5 g  
 300 gloves/box; 8 boxes/case

■ **1186 A-D** (XS-L)  
 2.5 mils<sup>1</sup>, 3.2 g  
 300 gloves/box; 8 boxes/case

**5+3**



# Duraflor Ultra®

White 5 % Sodium Fluoride Varnish

**FAST-ACTING, GREAT TASTING, DRIES CLEAR.**

Effective treatment of hypersensitivity. Dentist and patient preferred ready-to-use and easy-to-apply, non-clumping formula. Does not contain gluten, peanuts, tree nuts, soy, sesame, corn, shellfish, egg or dairy products.

- **1016-ST30** Strawberry
- **1016-M30** Mint
- **1016-CH30** Cherry
- **1016-BG30** Bubble gum

0.4 ml x 30 units/box  
Promotion also applicable on 200 units/box

**3+1**



## SafeWear High Performance Lab Coat

Premium Protective Apparel

Protection and style featuring knitted cuffs and collar.

- **8107 (A-F)** Deep Blue
- **8108 (A-D)** Pretty Pink
- **8109 (A-D)** Plum Purple
- 8110 (A-D)** White Frost
- **8112 (A-D)** Soft Blue
- **8117 (A-D)** Tropical Teal
- **8119 (A-D)** Jet Black

12 units/bag  
Also available in hip-length jacket.



**4+1**

## DentiCare™ Swivel

**NEW**

Oscillating Disposable Prophy Angle

Splatter control? Put a twist on it.

- **10057** Soft
- 10058** Firm
- 10059** Brush

100 units/box



**2+1**

# HemoStat™

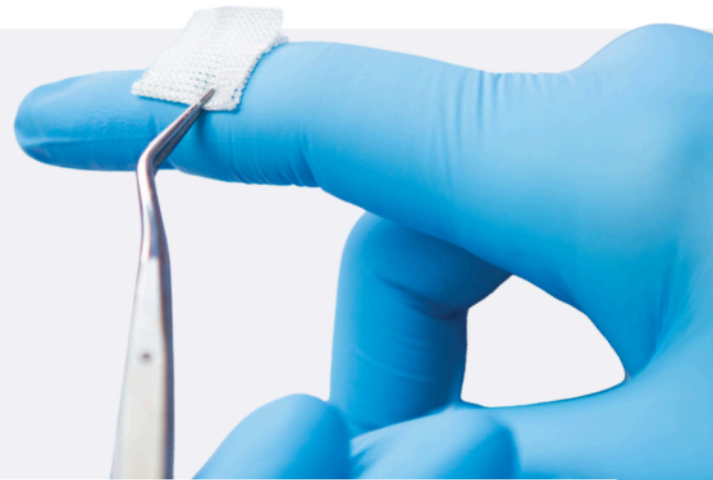
Topical Hemostatic Dressing

## Control bleeding stat.

No suturing required.

**4900-STAT** 0.75" x 0.75" - 4-ply  
20 units/box; 200 boxes/case

**2+1**



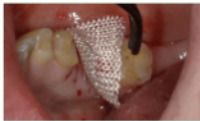
**How to use step by step:**



**Fig. 1** | Fresh extraction site.



**Fig. 3** | Form HemoStat at the site for proper coverage.



**Fig. 2** | Place HemoStat over site.



**Fig. 4** | HemoStat in place.



**Fig. 5** | The blood fluid transforms the dressing to a gel-like consistency in seconds and helps to control the bleed.  
Note: In situations where additional fluid is needed, saline can also be used.

*Images courtesy of Dr. Matthew R. Miller, Charlotte, NC.*

## Hedy

Polyisoprene Dental Dam



Elongation up to 1230%.  
Premium, tear-resistant,  
non-latex, powder-free.

- 320DNB-5M** 5 x 5" - Medium
- 320DNB-5H** 5 x 5" - Heavy
- 320DNB-6M** 6 x 6" - Medium
- 320DNB-6H** 6 x 6" - Heavy

30 units/box  
Also available in Latex.

**3+1**

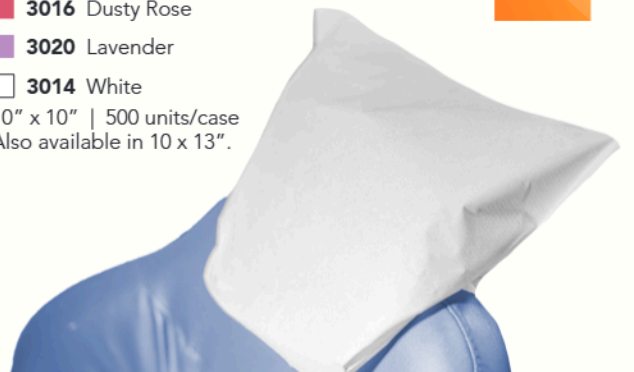
## SafeBasics

Tissue/Poly Headrest Covers

Reduce the risk of cross-contamination.  
Fluid repellent.

- 3015** Blue
  - 3016** Dusty Rose
  - 3020** Lavender
  - 3014** White
- 10" x 10" | 500 units/case  
Also available in 10 x 13".

**3+1**



# SafeMatrix™

Single-Use Matrix Band

## Make reprocessing and assembling matrix bands a thing of the past.

Increase workflow efficiency and gain time for patient care. For all MO/OD and MOD cavities, cusp build-ups or as a protective shield for neighbouring teeth during preparation, simply place, tighten and you are ready to go.

Now available with mylar band options for easy penetration of UV light for curing and increased visibility of composite.



**NEW**

**Clear Contour (mylar)**

**30065** Narrow 4.5 mm

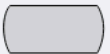
**30066** Wide 6 mm



**Contour (metal)**

**30060** Narrow 4.5 mm

**30055** Wide 6 mm

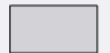


**Straight (metal)**

**30050** Narrow 4.5 mm

**30045** Wide 6 mm

50 units/box; 8 boxes/case



**2+1**

# SafeSeal Quattro

Self-Sealing Sterilization Pouches with TruePress™ Technology

## Engineered for Peace of Mind

Multivariable process indicators confirm time, temperature, and pressure.

- |                           |                          |
|---------------------------|--------------------------|
| <b>88000-4</b> 2 ¾ x 9"   | <b>88025-4</b> 5 ¼ x 10" |
| <b>88005-4</b> 3 ½ x 5 ¼" | <b>88030-4</b> 7 ½ x 13" |
| <b>88010-4</b> 3 ½ x 9"   | <b>88035-4</b> 10 x 14"  |
| <b>88015-4</b> 2 ¼ x 4"   | <b>88040-4</b> 12 x 17"  |
| <b>88020-4</b> 5 ¼ x 6 ½" | <b>88045-4</b> 4 ¼ x 11" |

**3+1**

200 pouches/box | Promotion available on bulk pack.



